



**Spray Lake Sawmills**



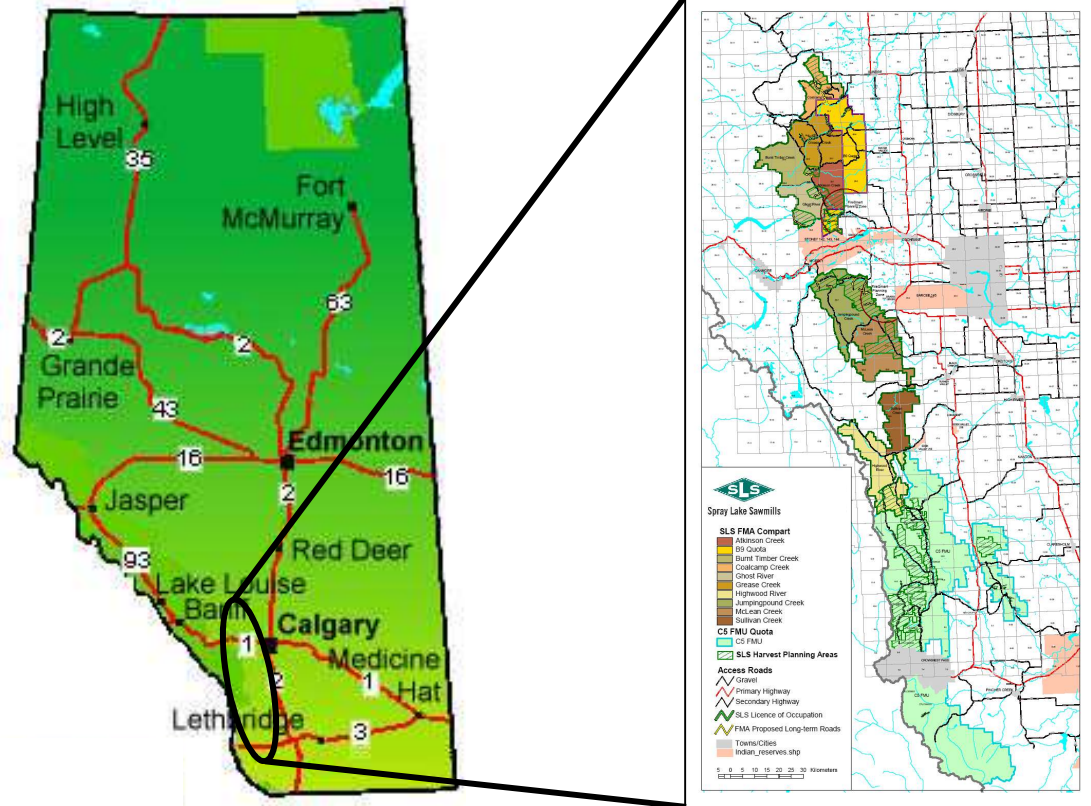
# WHO IS SPRAY LAKE SAWMILLS



- Family owned and operated
- 70+ yrs of forest management within the southern east slopes of Alberta
- Operates a modern dimension sawmill with secondary product lines including
  - Pulp chips
  - Agricultural fence posts
  - Pressure treated products
  - Landscaping and reclamation product lines under the name of Top Spray



# WHERE OUR WOOD COMES FROM



# WHY IS THIS IMPORTANT?



- The area receives high levels of use
- Forests are complex ecosystems that grow and evolve
- The forest is managed to ensure long term sustainability



# DEFINING MANAGEMENT OBJECTIVES



- What are we managing
- A wide range of activities and uses must be managed in a way that allow “all” to co-exist
  - Recreational uses, domestic grazing, oil & gas activity, timber harvesting



# MULTIPLE USES



Forests must also be managed in a way that sustains its various ecological functions

- Wildlife
- Water quantity and quality
- Carbon sequestration
- Aesthetic values
- Other ecological goods and services



# FOREST MANAGEMENT BALANCE



- We want to manage the forests similar to the concept of a three legged stool
- We want to manage it in a balanced way that accommodates:

- Economic values

- Ecological values

- Social values



Spray Lake Sawmills

# THE CHALLENGE

- What is “fire origin stands”
- Forest they have adapted to repeated fire cycles
- Forest fire suppression over the last 50+ years have left us with an unnaturally old forest age class structure



# THE CHALLENGE



- How do we manage the forests for its natural ecological values without fire?
- How do we re-introduce fire without endangering property, values and human life?
- How do we manage the economic aspects of the three legged stool if we let the forest burn?



# THE SOLUTION

- Create a managed disturbance
- How do we do this?
- **Timber harvesting** – use logging to manage the forests for a broad range of values in a manner which reduces risks that would normally come with fire



# THE OUTCOME

- Forestry and Forest Management is both renewable and sustainable
- It can be used as a tool to meet other resource management objectives and uses
  - Ecological values
  - Social values
  - Economic values



# THE OUTCOME



## **We Keep the Water Clean**

- Water comes out of the headwaters in a near pristine state
- We plan and conduct our operations in a way which minimizes ground disturbance and provides for streamside protection
- Provides for prompt reforestation and reclamation
- Addresses soil conservation



# THE OUTCOME

## **We Keep the Air Fresh**



- Forests consume carbon dioxide and give off oxygen
- Prompt reforestation and protecting understory vegetation helps support this process



# THE OUTCOME

## **We Protect Biodiversity**



- Biodiversity is the total accumulation of plants, animals and organisms on the land base
- We manage the forest with the objective of maintaining this naturally occurring diversity, from:
  - Species composition to
  - Age and structure of the forest



# THE OUTCOME

## **We Build Healthy Forests**



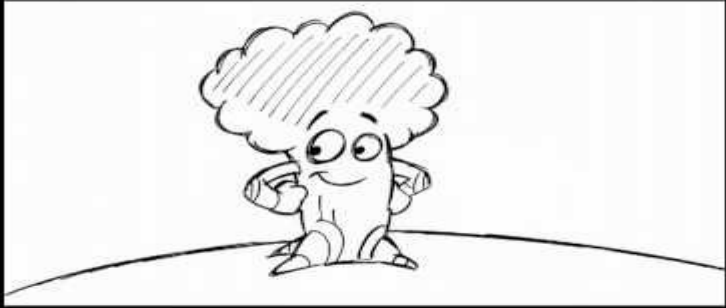
- A healthy diverse forest is a combination of the vegetation, water, wildlife, air, and soil which we need to sustain life.
- Healthy forests will be better able to recover from insects, disease, wildfire, flood and draught.



# OTHER BENEFITS

- Economic stability
- Stable employment
- Community support





Wood is good

 Private Forestry

 18

1,392

 8  0

