

## **RESPONSE TO COUNCILLOR INQUIRY / SUGGESTION**

### **COUNCILLOR SWENDSEID**

Councillor Swendseid inquired when the Tower Hill and Suntree pathways will be repaved.

### **Estimated Administrative Time to Respond**



Under 4 hours (no motion required)



Over 4 hours (motion required) Estimated Hours: n/a

### **Motion**

n/a

### **Response**

Each year pathways are inspected and assigned a condition rating. Pathway segments are marked with a green - acceptable, yellow – showing some decline, or red color – needing attention. Yellow and red segments are photographed and supporting comments and images are captured. From the data, geographic areas with the highest number of risk areas (red) and highest use are planned for repair first. The Town has an annual placeholder amount of \$76,000 for repairs and fully utilizes the budget to address as many priority areas as possible. In 2020, the focus was on the Max Bell pathway (south side of Sheep River, west of the car bridge) and culvert addition in Cimarron Park. In 2021, the focus was on Rowland Pathway (located atop a high pressure gas line) through Downey Ridge and Crystal Ridge.

The Suntree and Tower Hill segments do show a few red areas, however, they are predominantly in the green and yellow condition ratings presently. These pathways were added to receive snow clearing by Council, but do not currently meet primary pathway standards of three meters in width. Although the priorities for pathway repairs this year have not yet been finalized, it is worth noting that potential widening and grading/subgrade work would need additional funding beyond the annual pathway repairs and would require a project specific budget.

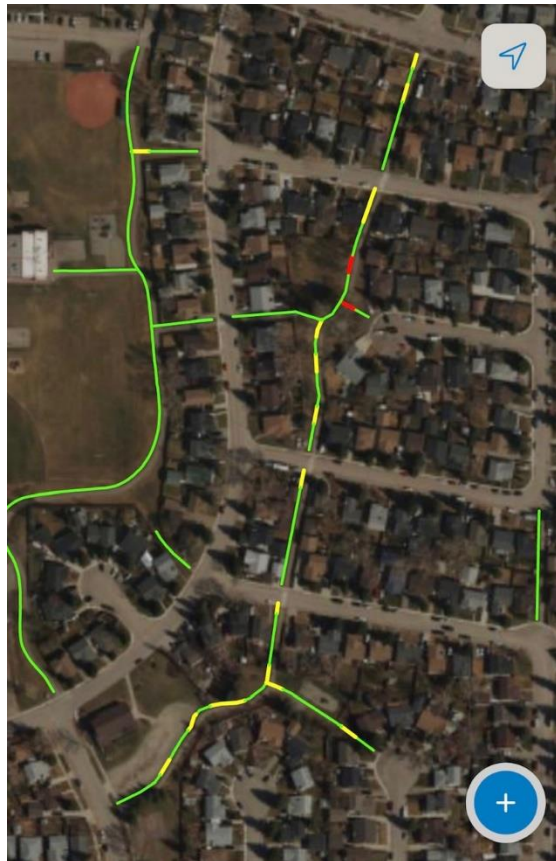
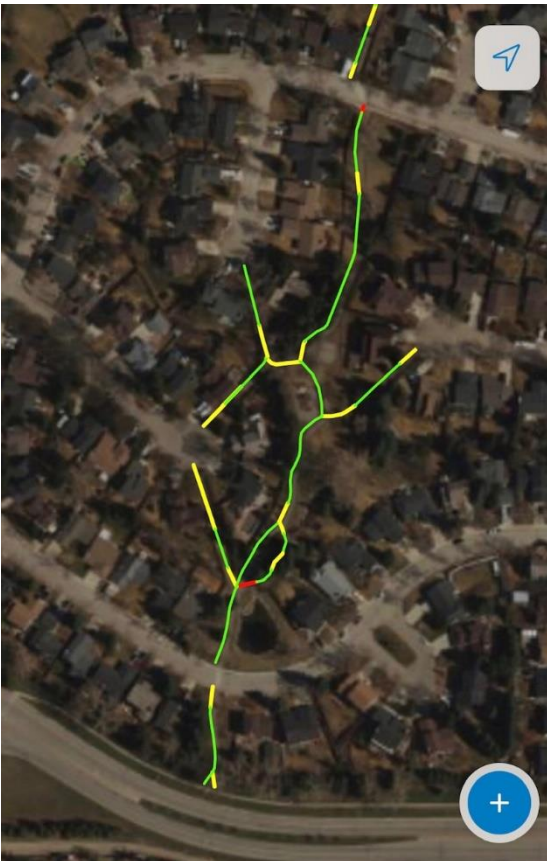
This year Administration is commencing the Active Transportation Implementation and Accessibility Project. This project is to further Council's Municipal Development Plan integrated transportation objectives to create a safe, equitable, sustainable multi-modal transportation network that prioritizes sustainable modes of transportation and people. This first step of this project will include identification of active transportation barriers, missing links and gaps throughout the entire community. This step will also include additional data collection and condition assessment on active transportation infrastructure (pathway and sidewalks). Major project outcomes and next steps will include developing a prioritization framework and a list of prioritized capital

improvements; this framework may also impact prioritization of pathway operating and maintenance projects.

As Administration moves through this Active Transportation Implementation and Accessibility Project there will be opportunities for public participation and Council updates. Given that this project may impact prioritization of maintenance projects, Administration is unable to provide an update on the scope and timing of any potential Suntree and Tower Hill repairs. Until an updated plan is in place, priority will continue to be to address highest risk areas, based upon available condition data, within the allocated budget.

Administration will continue to assess the condition of pathways throughout the town annually and adjust the maintenance plan accordingly to address highest risk areas within the allocated budget.

Images included: Suntree (left), Tower Hill (right)



**Attachment(s)**

n/a

Prepared by:  
Christa Michailuck  
Parks Manager  
March 31, 2022