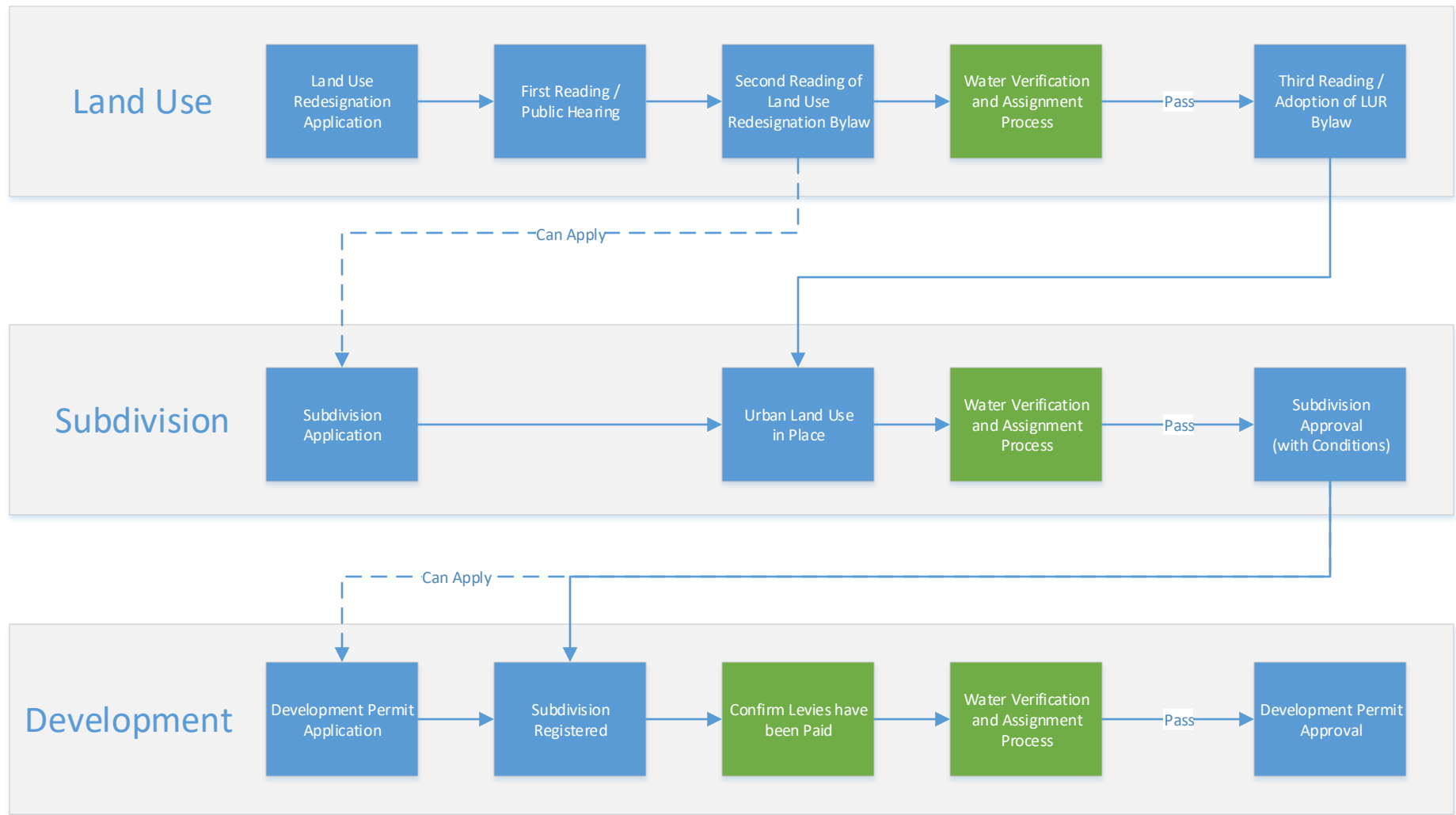
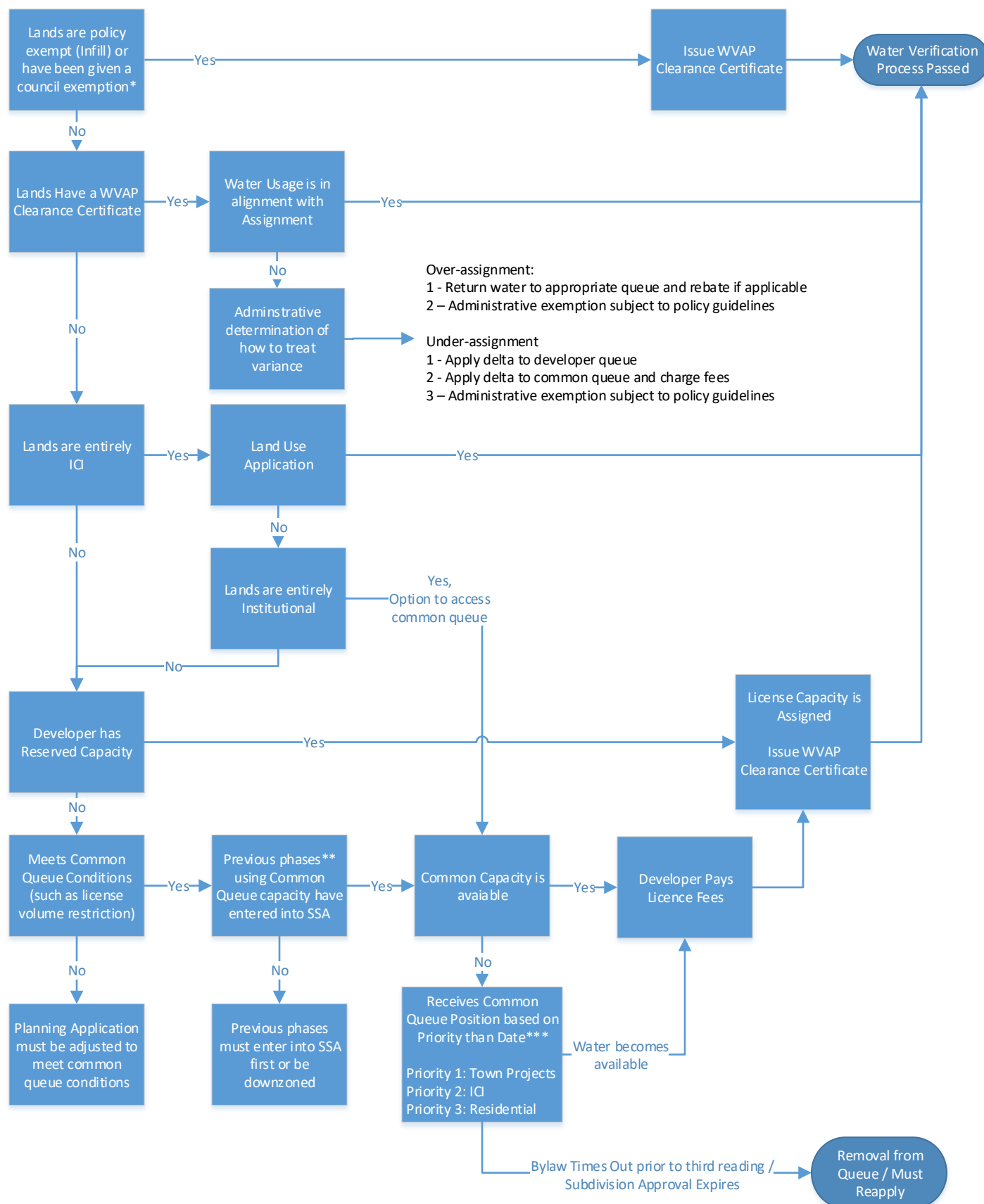


The Implementation of the Water Verification and Assignment Process throughout Typical Land Development



The Water Verification and Assignment Process



*Council always retains discretion with respect to the application of the policy and may grant an exemption to the requirements of the Water Allocation Policy or any element contained within the policy.

**See policy and Administrative guidelines for treatment of previous phases with land use and without assignment and or transition phases between developer and common queue capacity.

***Council may allow for deficit assignment/queue jumping based on strategic priorities